

# the cherubic hymn

*First Tone*

*The Intonation:*

A - na - ne - a - ne e -

e - es.

Let us who my

stic' - ly por - tray

who por -

tray the Che -

the Che -

*C D*  
ru - bim the Che -

*C D*  
ru - bim and

*A/D G/D*  
chant the thrice - ho -

*D G/D*  
ly hymn thrice - ho -

*A/D D*  
ly thrice - ho -

*C Un. D*  
ly hymn un - to the life -

*3 G/D D F/D G/D*  
cre - a - ting life - cre -

*A/D D G/D Un./D A/D*  
a ting Tri -

*G/D*

*Un./D* *A/D* *G/D* *A/D* *D*  
 Tri - ni - ty, lay a -  
*Un./D* *A/D* *G/D* *A/D*  
 side let us lay a - side  
*Un./D* *D*  
 all earth - ly care  
*C* *D* *A/D* *G/D* *A/D*  
 all earth - ly care  
*D* *Un./D* *A/D* *G/D* *A/D*  
 yea ev' - ry care.

After the Entrance:

*Un.* *D* *Un./D* *A/D*  
 A - men. That we may re - ceive  
*G/D* *A/D*  
 the King  
*Un./D* *D* *C* *D*  
 of all es - cort  
*A/D*  
 ed in - vi - sibly by the an -

ge - lic by the an - ge - lic

or - ders. A - le - lu - i -

a. A - le - lu - i - a. A - le -

lu - i - a.

# the anaphora

*First Tone*

*Un.* *D* *C* *D* *D*  
 Lord, have mer - cy. Lord, have mer - cy.

*D* *C* *D* *Un.* *C* *D*  
 Lord, have mer - cy. Lord, have mer - cy.

*Un.* *D* *C* *D* *D*  
 A - men. Grant this, O Lord. Grant this, O Lord.

*D* *A* *D* *C*  
 Grant this, O Lord. Grant this, O Lord. Grant this, O Lord.

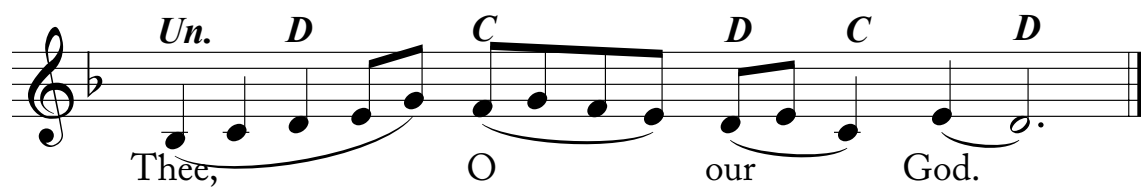
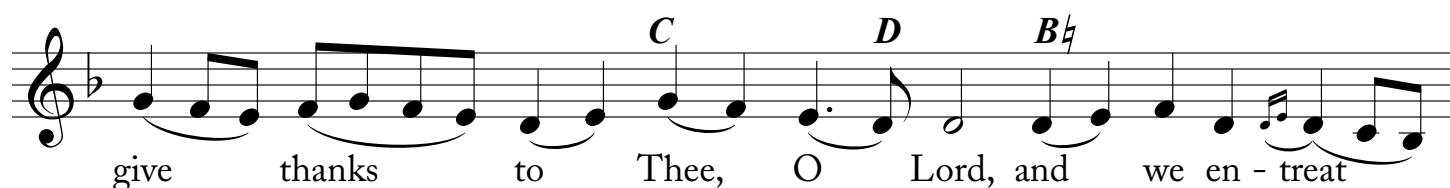
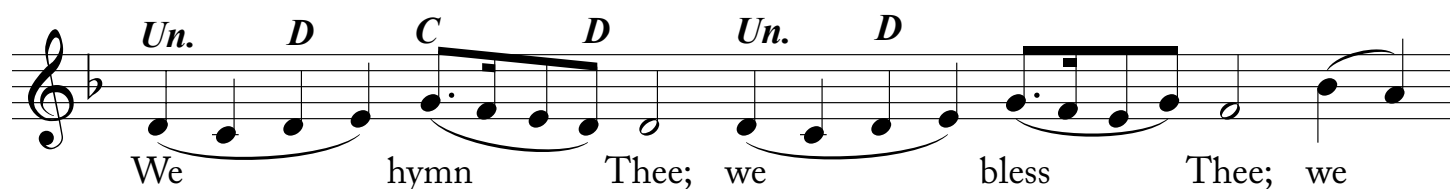
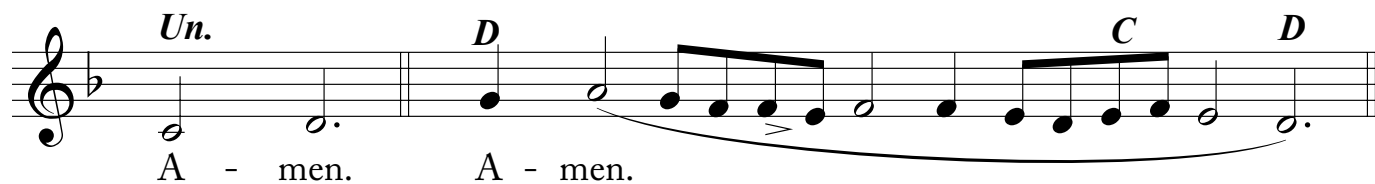
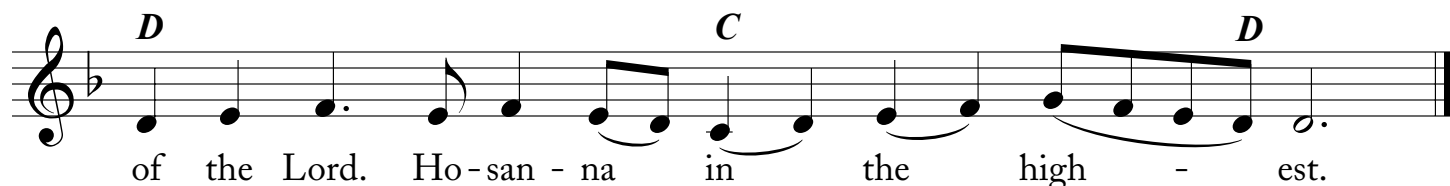
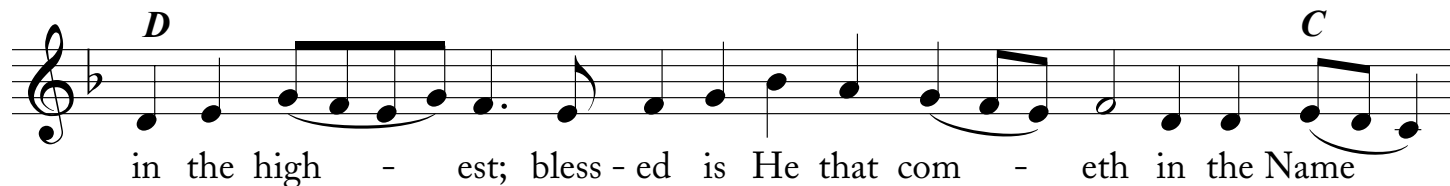
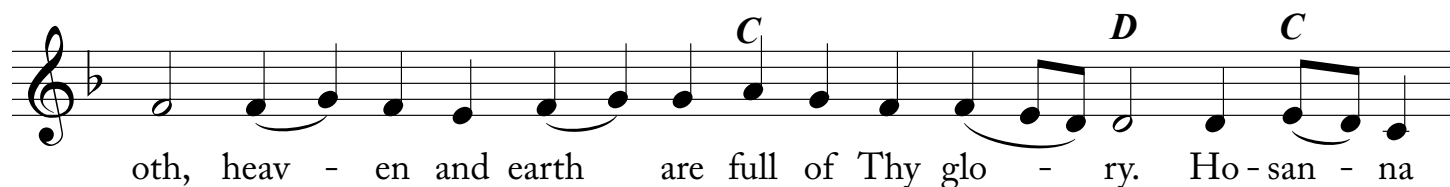
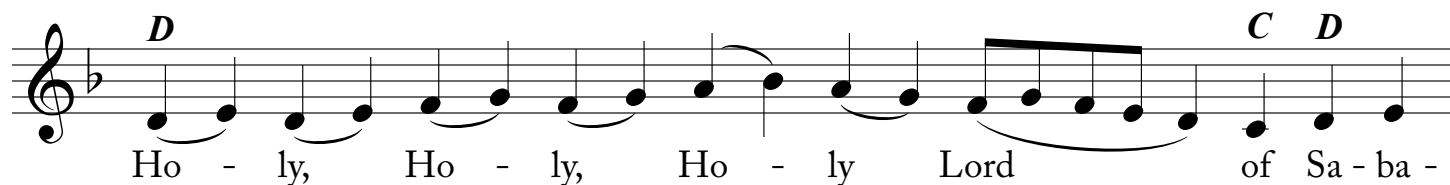
*D* *C* *D* *C* *D*  
 Grant this, O Lord. Most ho - ly The - o - to - kos, save us.

*C* *D* *Un.* *Un.* *D* *C* *D*  
 To Thee, O Lord. A - men. And to thy spi - rit.

*D*  
 Fa - ther, Son, and Ho - ly Spi - rit, the Tri -

*C* *D*  
 ni - ty one in es - sence and un - di - vid - ed.

*Un.* *D*  
 I will love Thee, O Lord,  
*C* *D* *A* *G*  
 my strength the Lord is my foun - da -  
*A* *D*  
 tion and my re - fuge and  
*C* *D*  
 my de - li - ver - er.  
*Un.* *D* *C* *D*  
 A mer - cy of peace, a sac - ri - fice of praise.  
*Un.* *D* *D*  
 And with thy spi - rit. We lift them to the Lord.  
*D* *C* *D* *C* *D*  
 Meet and right it is to wor - ship Fa - ther, Son and  
 Ho - ly Spi - rit, the Tri - ni - ty one in  
*C* *D*  
 es - sence and un - di - vid - ed.



# it is truly meet

*First Tone*



*D* *C* *D*  
 It is tru - ly meet to call thee blest, the  
*G*  
 The - o - to - kos, the ev - er - bless - ed and all - im -  
*D* *C*  
 ma - cu - late and Mo - ther of  
*D* *C* *D*  
 our God; more hon' - ra - ble than the Che - ru - bim,  
*G*  
 and be - yond com - pare more glo -  
*D* *C* *D* *Un.*  
 ri - ous than the Se - ra - phim, thee who with -  
*C* *D* *G*  
 out cor - rup - tion gav - est birth to God the  
*D*  
 Word, the ve - ry The - o - to - kos, thee do we  
*C* *D* *C*  
 mag - ni - fy.